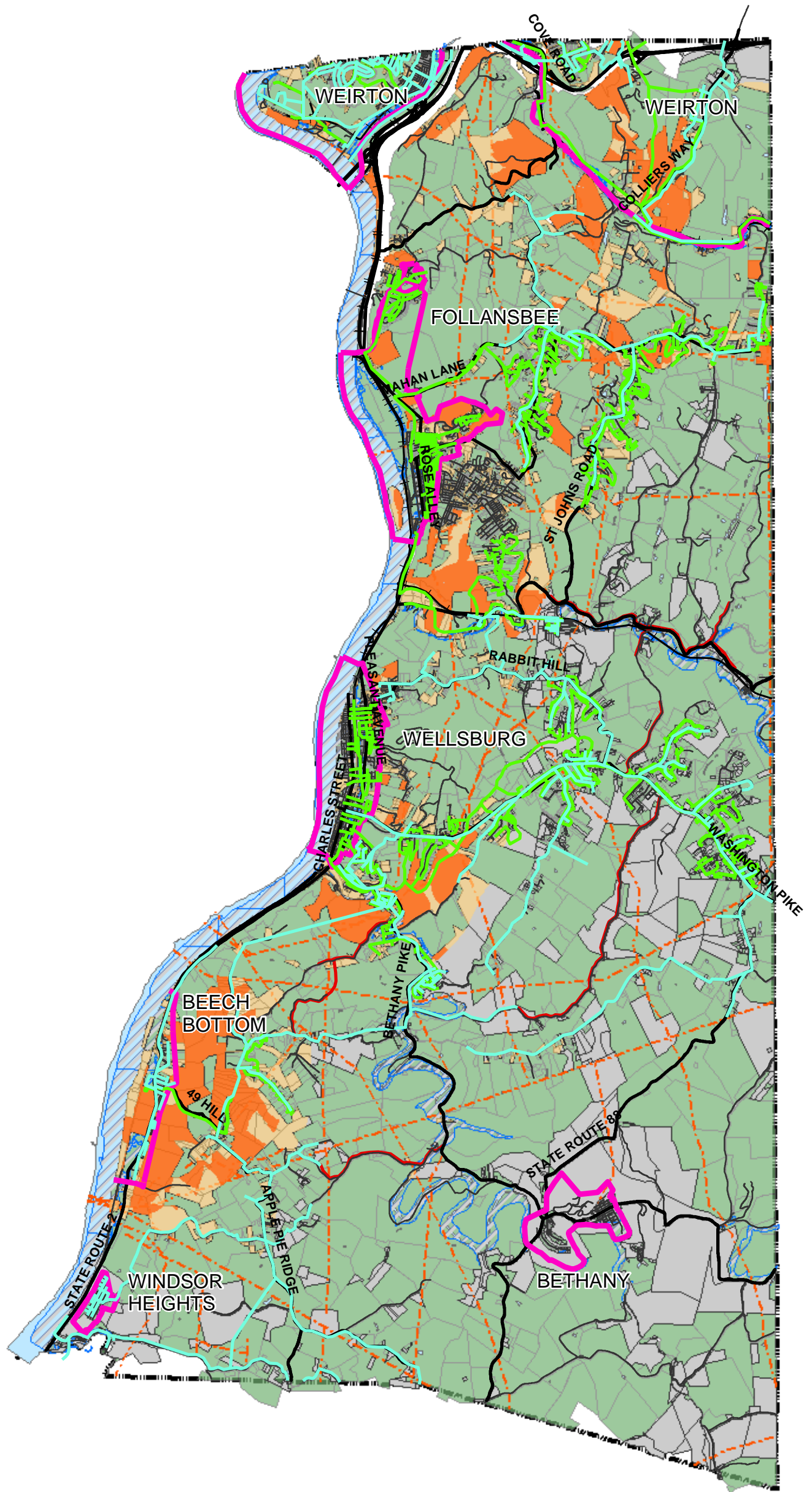


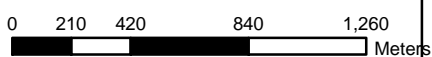


**Legend**

- Municipal Boundary
- Primary Roads
- Secondary Roads
- + + Railroad
- Existing Water
- Sanitary Sewer
- Proposed Water and Sewer Lines
- Gas lines
- Top Ranking Sites
- Selected Sites
- Undeveloped
- FEMA Q3 Floodplains
- Rivers and Streams
- Brooke County
- Parcels



September 29, 2004



**Map #6**  
**Brooke County**  
**Developable Parcels**

